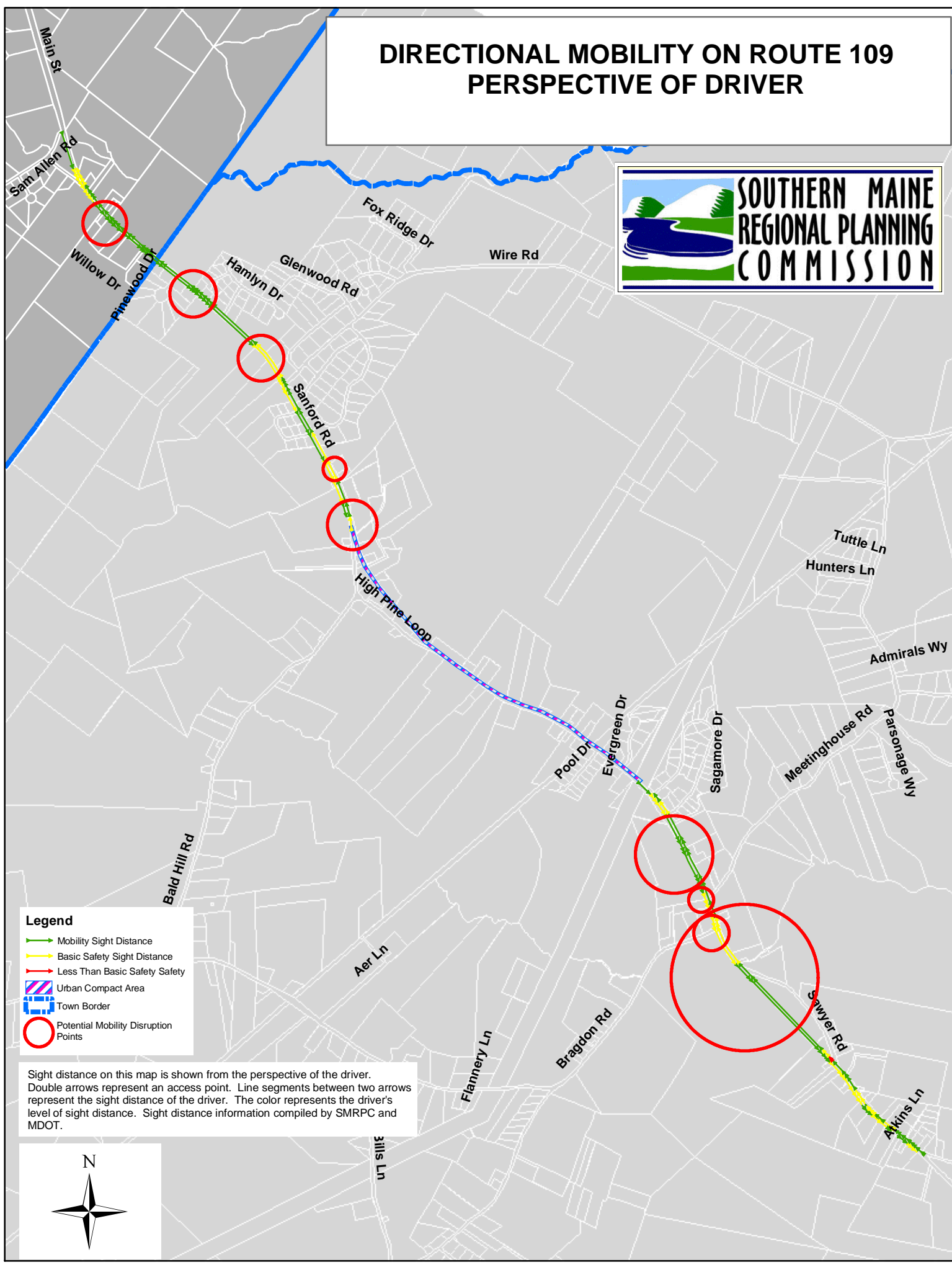


DIRECTIONAL MOBILITY ON ROUTE 109 PERSPECTIVE OF DRIVER

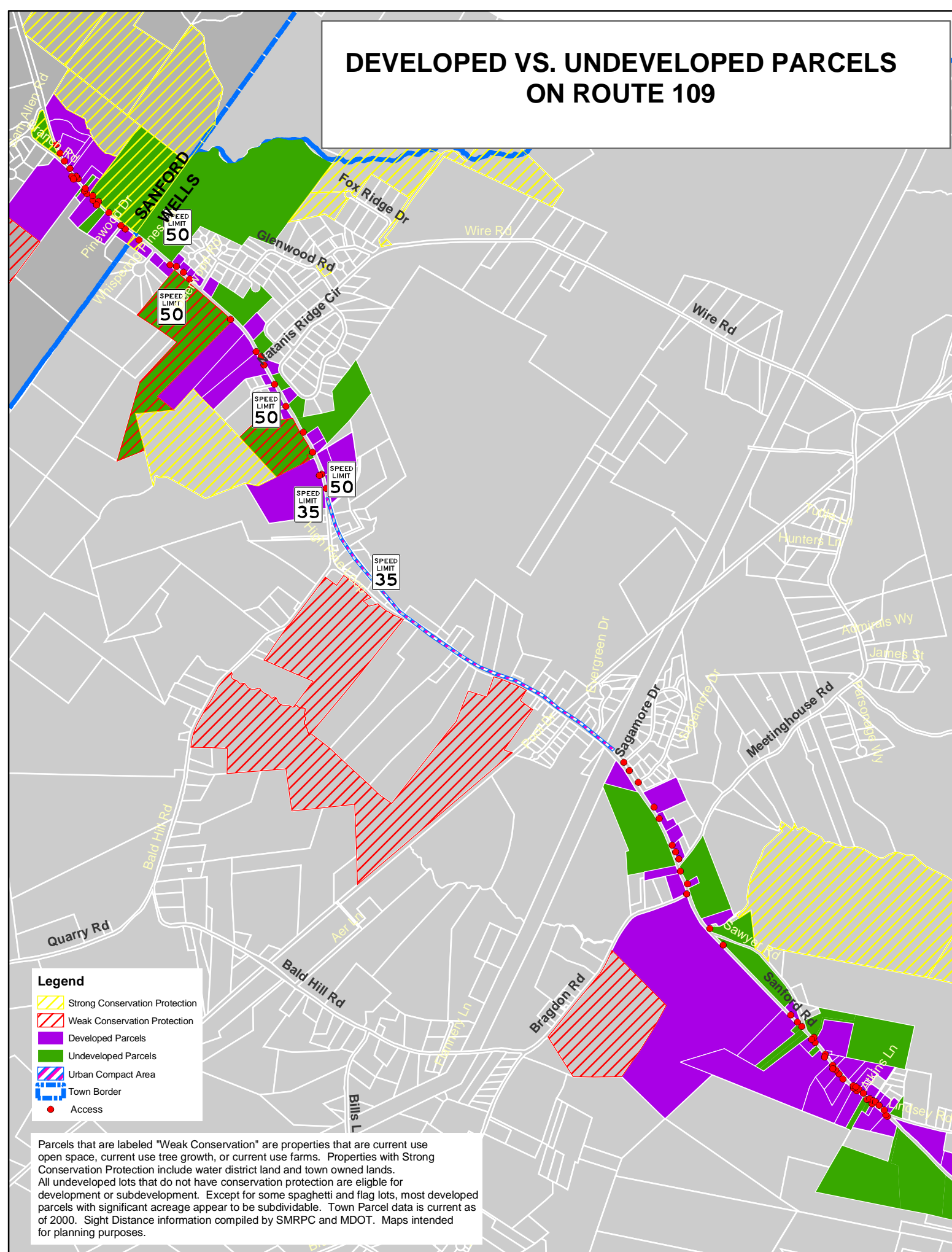


- Legend**
- Mobility Sight Distance
 - Basic Safety Sight Distance
 - Less Than Basic Safety
 - Urban Compact Area
 - Town Border
 - Potential Mobility Disruption Points

Sight distance on this map is shown from the perspective of the driver. Double arrows represent an access point. Line segments between two arrows represent the sight distance of the driver. The color represents the driver's level of sight distance. Sight distance information compiled by SMRPC and MDOT.



DEVELOPED VS. UNDEVELOPED PARCELS ON ROUTE 109



- Legend**
- Strong Conservation Protection
 - Weak Conservation Protection
 - Developed Parcels
 - Undeveloped Parcels
 - Urban Compact Area
 - Town Border
 - Access

Parcels that are labeled "Weak Conservation" are properties that are current use open space, current use tree growth, or current use farms. Properties with Strong Conservation Protection include water district land and town owned lands. All undeveloped lots that do not have conservation protection are eligible for development or subdivision. Except for some spaghetti and flag lots, most developed parcels with significant acreage appear to be subdividable. Town Parcel data is current as of 2000. Sight Distance information compiled by SMRPC and MDOT. Maps intended for planning purposes.