

# Regional Assets



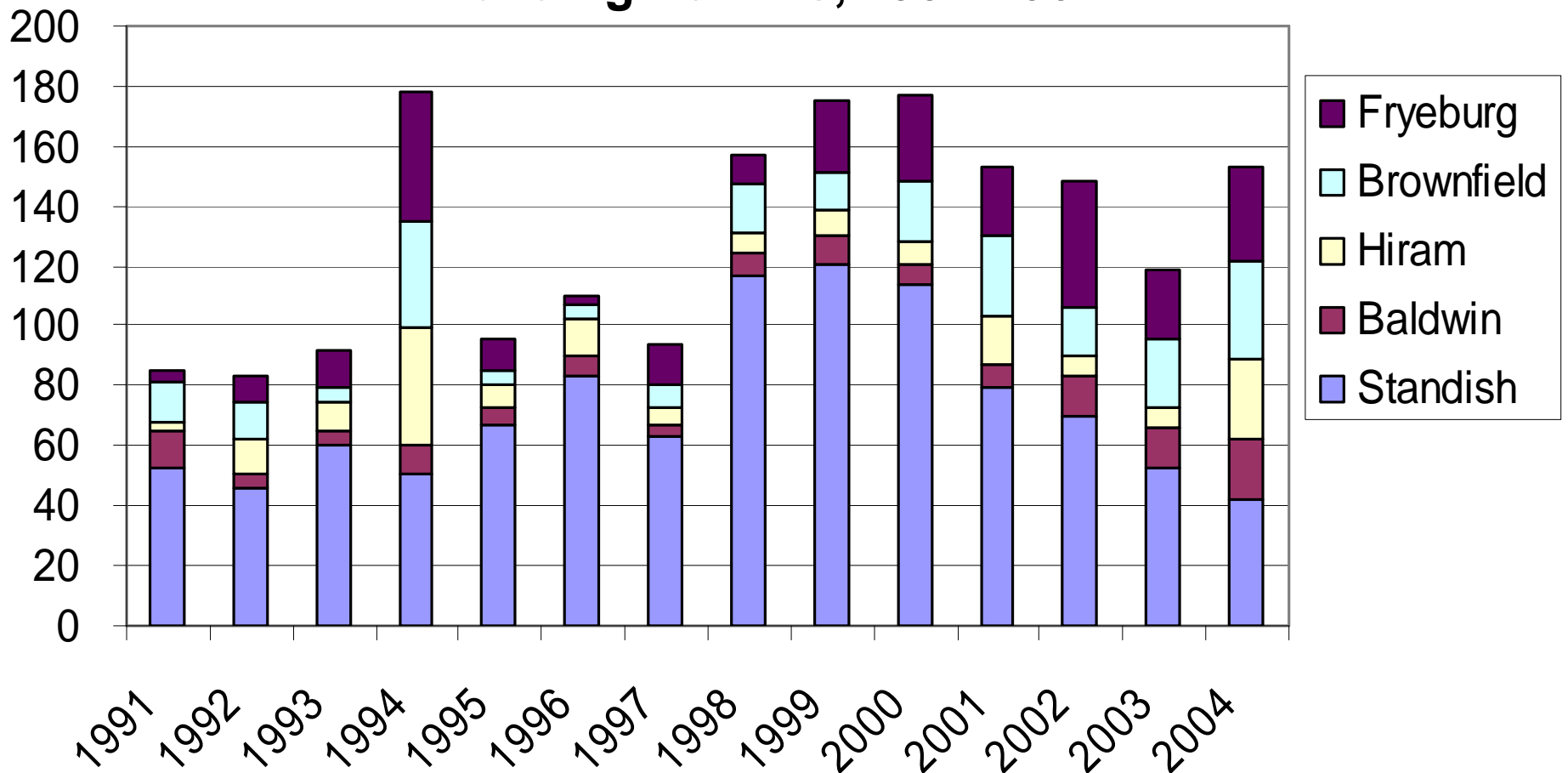
# Natural resource based heritage



# Shifting Growth

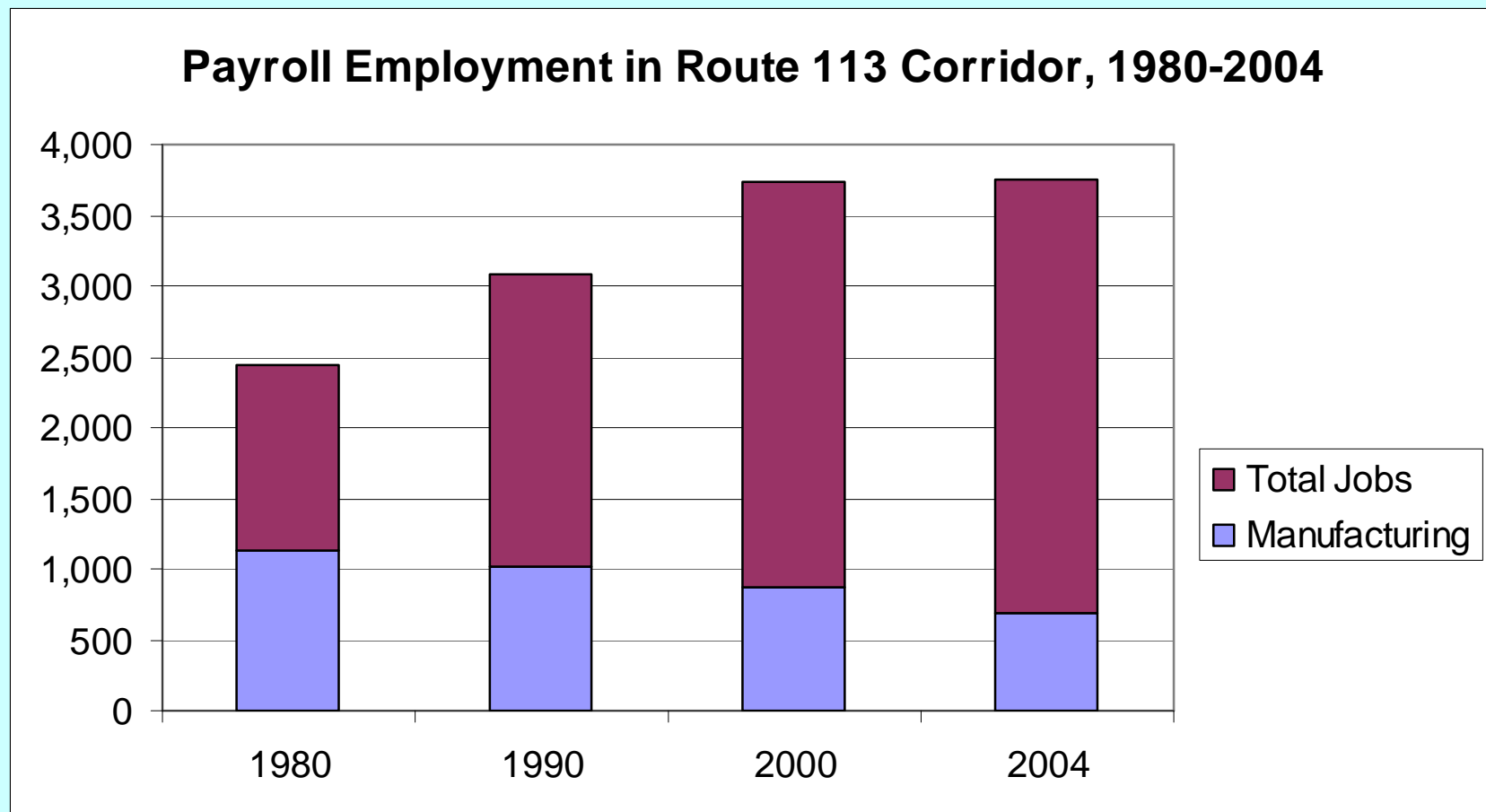
Construction in Standish peaked in 1999, with 121 permits. While growth has slowed there, permits pulled in Baldwin, Hiram, Brownfield, and Fryeburg in 2004 were more than double the average of the 1990's. Baldwin and Hiram are now considered part of Greater Portland.

## Building Permits, 1991-2004



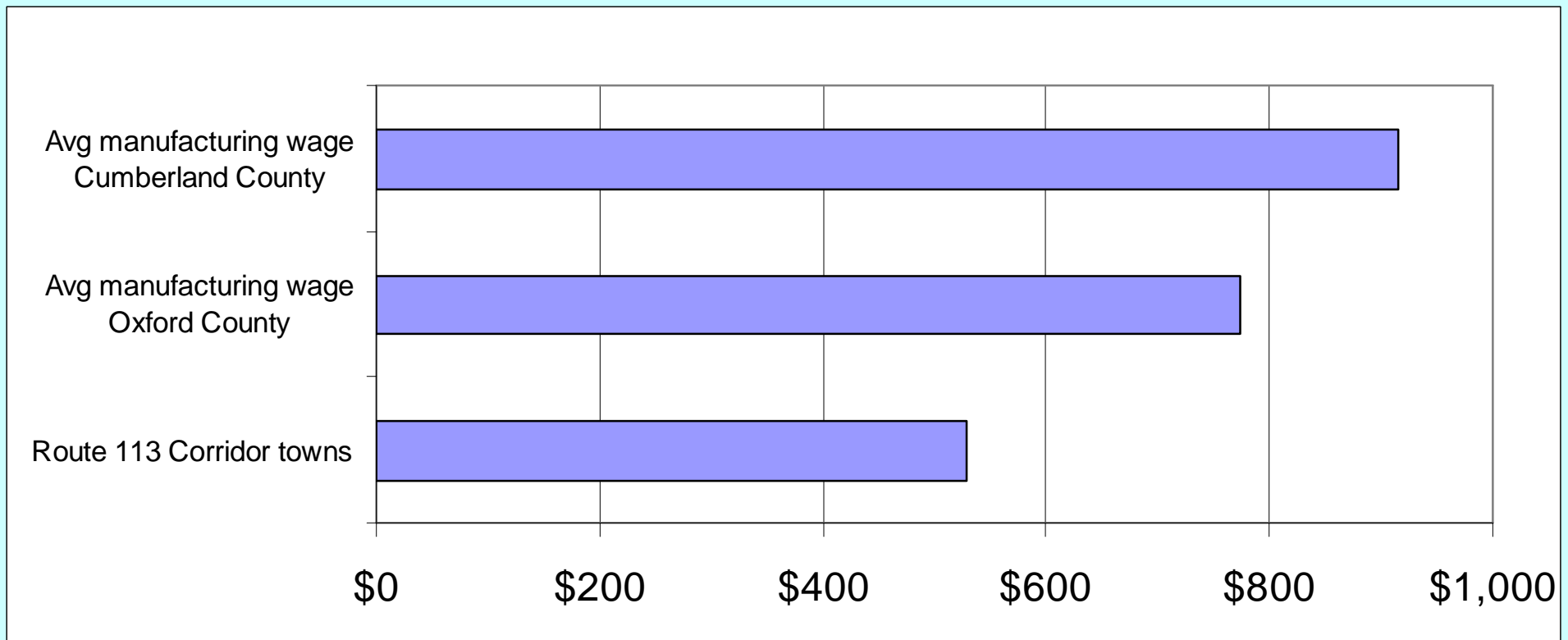
# Manufacturing Losses

*The Route 113 region hosts 3,756 payroll jobs. Over 1,000 residents are also self-employed. While the number of jobs has doubled over the last 25 years, the region has lost over 450 manufacturing jobs, primarily in the production of shoes and wood products.*



# Eroding Income

*The average weekly wage in 2004 for a job in the Corridor is \$528, compared to the average manufacturing wage in Cumberland County of \$915, or Oxford County, \$773. Based on the wage data, businesses in Baldwin, Hiram, Brownfield, and Fryeburg are eligible to participate in the Governor's Pine Tree Zone program.*



# Value added/niche manufacturing

